

15.00

AMENDMENT OF DECLARATION OF CONDOMINIUM OF
TIMBER RIDGE VILLAGE I, A CONDOMINIUM
(SURVEYOR'S CERTIFICATE NO. 14)

RECORD VERIFIED
JEFFREY K. BARTON
CLERK CIRCUIT COURT
INDIAN RIVER CO., FLA

749359

TIMBER RIDGE, INC. as Developer, hereby amends the
Declaration Of Condominium of TIMBER RIDGE VILLAGE I, A
CONDOMINIUM, dated and recorded in Official Record Book 705,
Page 653, Public Records of Indian River County, Florida,
by inclusion of the Surveyor's Certificate attached hereto
as Exhibit B.

DATED this 3rd day of August, 1992.

Signed, sealed and delivered
in the presence of:

TIMBER RIDGE INC.

Kelley Shacker

By: A. J. Mustapick
President

ATTEST: Susan V. Wright
Secretary

STATE OF FLORIDA)
COUNTY OF INDIAN RIVER)

I HEREBY CERTIFY that on this day, before me, an
officer duly authorized in the State and County aforesaid to
take acknowledgments, personally appeared ANDREW J MUSTAPICK
and SUSAN WRIGHT, respectively President and Secretary of
TIMBER RIDGE INC., to me well known, and they acknowledged
before me that they executed the foregoing instrument as
such officers of said corporation; and I FURTHER CERTIFY
that I know the said persons making said acknowledgment to
be the individuals described in and who executed the said
instrument.

WITNESS my hand and official seal this 5th day of
August, 1992.

Patricia A Mustapick
Notary Public
State of Florida at Large
My commission expires:

NOTARY PUBLIC, STATE OF FLORIDA.
MY COMMISSION EXPIRES: SEPT. 24, 1994.
BORNED THRO NOTARY PUBLIC UNDERWRITERS

RETURN TO: Timber Ridge Inc.
700 Timber Ridge Trail
Vero Beach, FL 32962

92 AUG - 6 PM 4: 22

OR0942PG2465

David M. Jones
Professional Land Surveyor
2945 1st Road
Vero Beach, FL 32968
(407) 567-9875

**AMENDMENT TO DECLARATION OF CONDOMINIUM OF
TIMBER RIDGE VILLAGE I-A , A CONDOMINIUM**

CERTIFICATION :

The undersigned land surveyor hereby certifies that the construction of the improvements to comprise Building C - 1 , Timber Ridge Village I-A , a Condominium , is substantially complete so that the material which comprises this amendment to the Declaration of Condominium of Timber Ridge Village I-A , a Condominium together with the provisions of said Declaration of Condominium describing the Condominium property , are an accurate representation of the location and dimensions of said improvements , and the identification , location and dimensions of the common elements within the Condominium and of each unit within the Condominium can be determined from said materials . Further , all improvements , including , but not limited to , landscaping , utility services and access to Building C - 1 common elements facilities serving Building C - 1 , as set forth in said Declaration , are substantially completed .

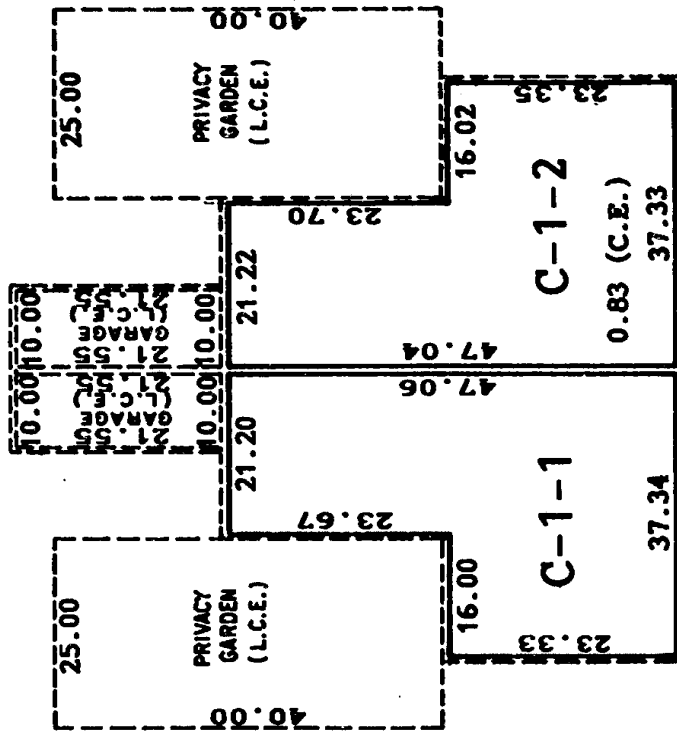
Dated this 31st day of July , 1992 .



David M. Jones
Professional Land Surveyor
Florida Registration #3909

EXHIBIT "1" TO THE DECLARATION OF CONDOMINIUM OF
TIMBER RIDGE VILLAGE I-A CONDOMINIUM

BUILDING C-1



- LEGEND**
- (C.E.) COMMON ELEMENT
 - (L.C.E.) LIMITED COMMON ELEMENT
 - UNIT BOUNDARY

DESCRIPTION OF COMMON ELEMENTS

1. ALL LAND AND ALL PORTIONS OF CONDOMINIUM PROPERTY NOT WITHIN ANY UNIT OR UNITS, ARE PARTS OF THE COMMON ELEMENTS.
2. ALL BEARING WALLS TO THE UNFINISHED SURFACE OF SAID WALLS WITHIN A UNIT, CONSTITUTE PARTS OF THE COMMON ELEMENTS.
3. ALL CONDUITS AND WIRES TO OUTLETS, ALL OTHER UTILITY LINES TO OUTLETS AND ALL WASTE PIPES, REGARDLESS OF LOCATION, CONSTITUTE PARTS OF THE COMMON ELEMENTS.
4. THE COMMON ELEMENTS ARE SUBJECT TO CERTAIN EASEMENTS SET FORTH IN THE DECLARATION INCLUDING INGRESS AND EGRESS TO PUBLIC WAYS.

NOTE: THE DEFINITIONS SET FORTH IN THE DECLARATION ARE INCORPORATED HEREIN.

David M. Jones
 Professional Land Surveyor
 (407) 567-9675
 2945 1st Road,
 Vero Beach, FL 32908