

Rec 10.52

**David M. Jones**  
Professional Land Surveyor  
2945 1st Road  
Vero Beach, FL 32968  
(407) 567-9875

RECORD VERIFIED  
JEFFREY K. BARTON  
CLERK CIRCUIT COURT  
MIAMI RIVER CO., FLA


732054

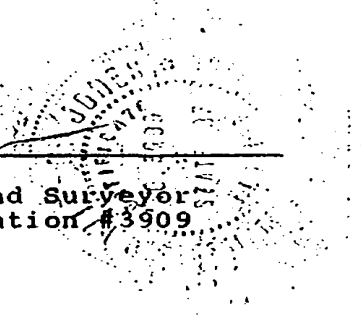
AMENDMENT TO DECLARATION OF CONDOMINIUM OF  
TIMBER RIDGE VILLAGE I , A CONDOMINIUM

CERTIFICATION :

The undersigned land surveyor hereby certifies that the construction of the improvements to comprise Building B - 1 , Timber Ridge Village I , a Condominium , is substantially complete so that the material which comprises this amendment to the Declaration of Condominium of Timber Ridge Village I , a Condominium together with the provisions of said Declaration of Condominium describing the Condominium property , are an accurate representation of the location and dimensions of said improvements , and the identification , location and dimensions of the common elements within the Condominium and of each unit within the Condominium can be determined from said materials . Further , all improvements , including , but not limited to , landscaping , utility services and access to Building B - 1 common elements facilities serving Building B - 1 , as set forth in said Declaration , are substantially completed .

Dated this 31st day of March , 1992 .

  
\_\_\_\_\_  
David M. Jones  
Professional Land Surveyor  
Florida Registration #3909



Return to: Timber Ridge, Inc.  
700 Timber Ridge Trail, Vero Bch., FL 32962

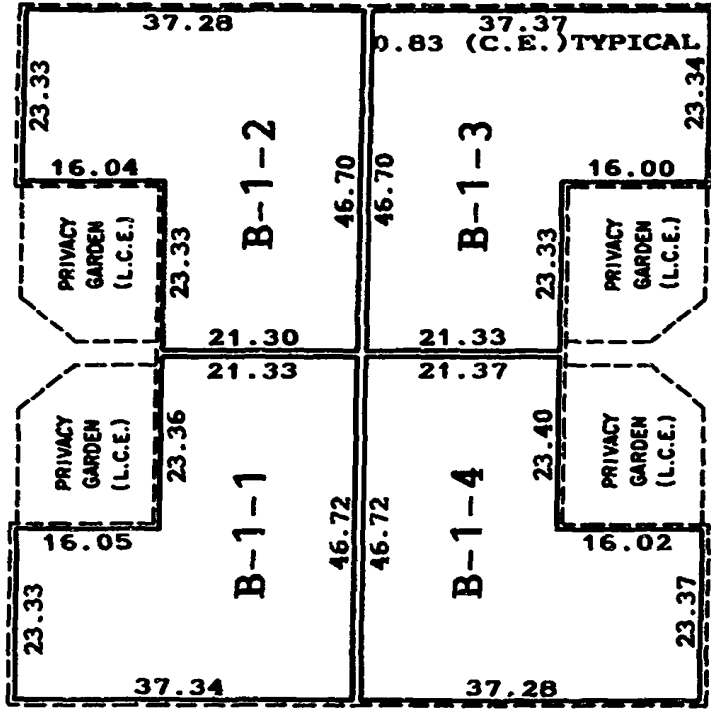
92 APR -2 PM 2:32

OR0929PG0766

EXHIBIT "1" TO THE DECLARATION OF CONDOMINIUM

TIMBER RIDGE VILLAGE I - A CONDOMINIUM

BUILDING B - 1



LEGEND

(C.E.) COMMON ELEMENT

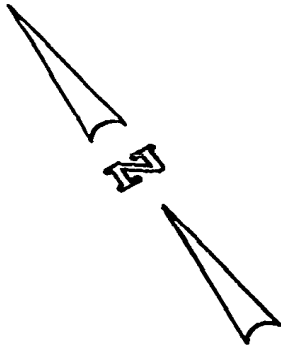
(L.C.E.) LIMITED COMMON ELEMENT

— UNIT BOUNDARY

DESCRIPTION OF COMMON ELEMENTS

1. ALL LAND AND ALL PORTIONS OF CONDOMINIUM PROPERTY NOT WITHIN ANY UNIT OR UNITS, ARE PARTS OF THE COMMON ELEMENTS.
2. ALL BEARING WALLS TO THE UNFINISHED SURFACE OF SAID WALLS WITHIN A UNIT, CONSTITUTE PARTS OF THE COMMON ELEMENTS.
3. ALL CONDUITS AND WIRES TO OUTLETS, ALL OTHER UTILITY LINES TO OUTLETS AND ALL WASTE PIPES, REGARDLESS OF LOCATION, CONSTITUTE PARTS OF THE COMMON ELEMENTS.
4. THE COMMON ELEMENTS ARE SUBJECT TO CERTAIN EASEMENTS SET FORTH IN THE DECLARATION INCLUDING INGRESS AND EGRESS TO PUBLIC WAYS.

NOTE: THE DEFINITIONS SET FORTH IN THE DECLARATION ARE INCORPORATED HEREIN.



David M. Jones  
Professional Land Surveyor

(407) 567-9675

2945 1st Road,  
Vero Beach, FL 32968

RD0929PC0761