

David M. Jones
Professional Land Surveyor
2945 1st Road
Vero Beach, FL 32968
(407) 567-9875

RECORD VERIFIED
JEFFREY K. BARTON
CLERK CIRCUIT COURT
INDIAN RIVER CO., FLA

AMENDMENT TO DECLARATION OF CONDOMINIUM OF
TIMBER RIDGE VILLAGE I , A CONDOMINIUM

CERTIFICATION :

The undersigned land surveyor hereby certifies that the construction of the improvements to comprise Building B - 2 , Timber Ridge Village , a Condominium , is substantially complete so that the material which comprises this amendment to the Declaration of Condominium of Timber Ridge Village I , a Condominium together with the provisions of said Declaration of Condominium describing the Condominium property , are an accurate representation of the location and dimensions of said improvements , and the identification , location and dimensions of the common elements within the Condominium and of each unit within the Condominium can be determined from said materials . Further , all improvements , including , but not limited to , landscaping , utility services and access to Building B - 2 common elements facilities serving Building B - 2 , as set forth in said Declaration , are substantially completed .

Dated this 9th day of July , 1992 .



David M. Jones
Professional Land Surveyor
Florida Registration #3909

Return to: Timber Ridge Inc
700 Timber Ridge Trl. SW
Vero Beach, FL 32962

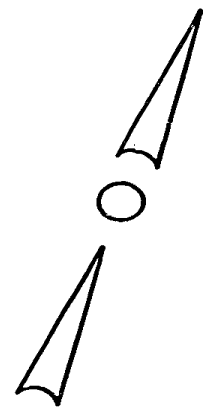
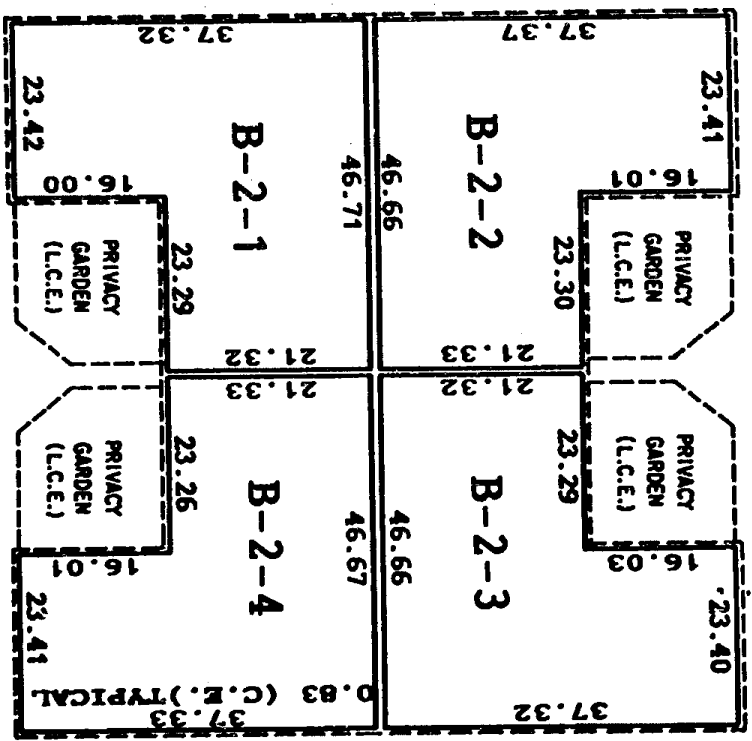
10.50

745893

92 JUL 10 PM 4:31

OR0940FC0366

EXHIBIT "1" TO THE DECLARATION OF CONDOMINIUM
TIMBER RIDGE VILLAGE I - A CONDOMINIUM
BUILDING B-2



LEGEND
 (C.E.) COMMON ELEMENT
 (L.C.E.) LIMITED COMMON ELEMENT
 ——— UNIT BOUNDARY

DESCRIPTION OF COMMON ELEMENTS

1. ALL LAND AND ALL PORTIONS OF CONDOMINIUM PROPERTY NOT WITHIN ANY UNIT OR UNITS, ARE PARTS OF THE COMMON ELEMENTS.
2. ALL BEARING WALLS TO THE UNFINISHED SURFACE OF SAID WALLS WITHIN A UNIT, CONSTITUTE PARTS OF THE COMMON ELEMENTS.
3. ALL CONDUITS AND WIRES TO OUTLETS, ALL OTHER UTILITY LINES TO OUTLETS AND ALL WASTE PIPES, REGARDLESS OF LOCATION, CONSTITUTE PARTS OF THE COMMON ELEMENTS.
4. THE COMMON ELEMENTS ARE SUBJECT TO CERTAIN EASEMENTS SET FORTH IN THE DECLARATION INCLUDING INGRESS AND EGRESS TO PUBLIC WAYS.

NOTE: THE DEFINITIONS SET FORTH IN THE DECLARATION ARE INCORPORATED HEREIN.

David M. Jones
 Professional Land Surveyor

(407) 567-9875
 2945 1st Road,
 Vero Beach, FL 32908